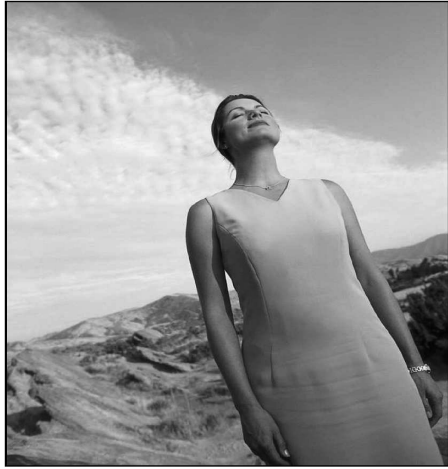




**Suffolk Medical Imaging, P.C.**  
**Open MRI @ Smith Haven**  
**Mid-Island Medical Imaging, P.C.**



**BOARD CERTIFIED  
 RADIOLOGISTS**  
 Neuroradiology  
 Nuclear Medicine  
 Musculoskeletal Radiology  
 Pediatric Radiology  
 Interventional Radiology  
 Cardiovascular Radiology

**ACR ACCREDITED  
 OFFICES**

High Field MRI/MRA  
 Open MRI  
 Cardiac CT/CTA  
 16 Slice PET/CT  
 Nuclear Medicine  
 Digital Mammography  
 Bone Density Testing  
 Gynecological Imaging  
 X-Ray & Fluoroscopy

**Alexandra B. Perkins, M.D.**

**MEDICAL DIRECTOR & WOMEN'S IMAGING SPECIALIST**

**Stereotactic & Ultrasound Guided Procedures**  
 Biopsies, Aspirations, Lap Band Adjustments, etc.

2780 Middle Country Rd.  
 Suite 210  
 Lake Grove, NY 11755  
**(631)588-4500**

8 Technology Drive  
 Suite 104  
 East Setauket, NY 11733  
**(631)689-5252**

112 Professional Center  
 1643 Route 112  
 Medford, NY 11763  
**(631)758-1800**

Medicare/Medicaid, Workers' Compensation, No-Fault and Most Major Medical Plans Accepted

**Focus on health**

**Therapy center offers**



**SHAPEUP:** Physical therapist Michael Badalamente (below right) works with patient George Fenster (below, and left) as part of the Parkinson's therapy program also attended by (above, from left) Nancy Puleio, Norman Green and Nora Bourrut.



**St. James  
 Healthcare  
 Center**

*Our staff's unequalled professionalism and superb loving care are the very heart of our commitment to service.*

**Long Term Care • Sub-Acute Care • Short Term Rehab**

**Nursing Services**

- 24-hour Nursing Care
- Post-surgical Management
- Management of Medical Conditions and Treatments
- Respiratory and Tracheotomy Care

**Therapy Services**

- Nursing Rehab (7 days)
- Physical Therapy (6 days) including Neurological & Orthopedic Rehabilitation
- Occupational Therapy (6 days)
- Speech Therapy

**Therapy Services**

- Psychological Services
- Art Therapy
- Enteral Nutrition Support Program
- Sensory Stimulation Program
- Therapeutic Recreation

**Medical Services**

- Dentistry
- Podiatry
- Audiology
- Optometry
- Laboratory Services

**Call our Admissions Office Tel: (631) 862-8000 Ext 105 or 106**

275 Moriches Road, St. James, NY 11780 • Fax: (631) 862-6456

## Focus on health

# relief and recreation for Parkinson's patients

By **URSULA MOORE**

The song Ladies Night by Kool and the Gang is playing on the stereo, and the patients at Smithtown Parkinson Therapy Center are shaking their hips and clapping—a huge feat for individuals with a debilitating disease characterized by muscle rigidity, tremors and a slowing of physical movement.

The therapy center located at the United Methodist Church in Smithtown is nonsectarian. The program started in 1968 with a former pastor's wife having Parkinson's and wanting people to learn how to cope with it. The therapy center includes a group exercise area and a mat room containing updated fitness rehabilitation equipment.

"It is a very big deal for people who have Parkinson's disease to come here," said center director Julie Garofalo. "They get to exercise and talk about their feelings."

The program offers a staff doctor, registered nurse, licensed physical therapist and an exercise instructor. It is the only physical therapy center on Long Island that caters exclusively to Parkinson's and its particular problems.

"I do a lot of stretching with the patients because stiffness is a big part of having Parkinson's," physical

therapist Michael Badalamente said. "I have them do endurance activities, treadmills, free weights and stationary bikes."

Thankfully, individuals can come to the therapy center to loosen their limbs and have their spirits uplifted.

"We celebrate birthdays here, we have pizza and cake," said Ms. Garofalo. "I have been here 11 years, and it is wonderful to see everyone getting along so well. We have patients age 50 all the way to their late 80s come here, and everyone feeds off of each other. The flow of energy is great."

Parkinson Therapy Center patient Nora Bourrut, 66, of Smithtown, agreed. "I don't know where I would have been without this place," she said. "The anxiety is relieved here by talking to other people with Parkinson's."

Nancy Puleio, 68, of St. James happily attends the center once a week. "From the first time I came here, I was comfortable. Having Parkinson's, you feel like you are disappearing from life. You don't feel that way here," she said. "I deal with a lot of pain, and coming here helps a lot. It often feels like my body has been run over by a steamroller and my feet often feel like they are stuck in cement and the fatigue is incredible, too. I could have nine hours of sleep and still be tired."

Diagnosed six years ago with

Parkinson's, Norman Green, 75, of Nesconset enjoys the positive atmosphere too. "It raises my morale being with people that share the same problems," he said. "The exercises also help."

A drastic change in a patients' gait is a common occurrence in the center. "I have seen people come in here with a stooped walk," Ms. Garofalo said, "and now they are walking straight up."

The therapy group meets Mondays, Wednesdays and Fridays from 9:15 a.m. to 11:15 a.m. The center operates on a non-profit basis with only a minimal monthly charge to cover expenses. Prices are \$65 for one month for once-a-week participants, \$95 for one month for twice-a-week participants and \$115 for one month for three-times-a-week participants.

"There are no words to say how wonderful the staff and people are here," Mrs. Puleio said. "It's beyond great, and Julie is the kindest, most compassionate person. It is so uplifting here."

For additional information about Smithtown Parkinson Therapy Center, call 631 265-6621 or visit <http://sptc.akwebb.net>.



**GETTING BACK ON TRACK:** Nancy Puleio leads the participants during a walking exercise at the Smithtown Parkinson Therapy Center. "Having Parkinson's, you feel like you are disappearing from life," Mrs. Puleio said. "You don't feel that way here."

[www.cancer-radiation.com](http://www.cancer-radiation.com)

## New Breast Cancer Treatment Options



### Accelerated Partial Breast Radiation Therapy

**The First on Long Island to Offer the Contura Applicator**

270 Pulaski Road  
Greenlawn, NY  
(631) 427-2273



989 Jericho Turnpike  
Smithtown, NY  
(631) 864-5600

100908

A Beautiful **Smile**  
Can Go A Long Way...

## NowDental of Suffolk

Advanced Dental Treatment  
One Office  
One Team  
One Goal: **Ultimate Care**



Certified **invisalign** Location  
State of The Art **LAPES** Laser Technology  
**World Class** Implant Rehabilitation Center  
Specialists Available For *All* Procedures

*Apprehensive Patients?*  
We Have Solutions To Make Your Experience  
As **Quick** And **Painless** As Possible,  
**Just Ask Us How!**

**Call Us For An Appointment!**  
**(631)360-8000**

496 Smithtown Bypass, Suite 300  
Smithtown, NY 11787

**NOW DENTAL**  
OF SUFFOLK  
ADVANCED DENTAL CARE

[www.nowdentalofsuffolk.com](http://www.nowdentalofsuffolk.com)

800908